

*Get your Retirement
Package from
Employees' Group
Insurance*

**At least a couple of months before
you retire, please contact the
Employees' Group Insurance office.**

**We will look up the coverage you are
currently enrolled in and put
together a packet of information
that will tell you what options you
have and what it will cost you to
continue that coverage into
retirement; and, of course, answer
any of your questions and concerns.**

Employees' Group Insurance

Emerson Building
2001 Capitol Avenue
Room 106
Cheyenne, WY 82002
Phone: 307-777-6835
800-891-9241
Fax: 307-777-7685
syount@state.wy.us

<http://personnel.state.wy.us/EGI/Index.htm>

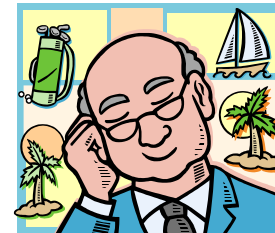
Wyoming Retirement System

6101 Yellowstone
5th Floor
Cheyenne, WY 82002
Phone: 307-777-7691
Fax: 307-777-5995
pension@state.wy.us
<http://retirement.state.wy.us>

Employees' Group Insurance

**GETTING
READY TO
RETIRE?**

*Helpful information for employees
that wish to continue health,
dental and life insurance and
Flexible Spending Accounts into
retirement.*



Continuing your coverage as a retiree

It is your responsibility to notify the Group Insurance office when you plan to retire and want to continue your health, dental and life insurance benefits through the State's group plans as a retiree.

- Please remember, Employees' Group Insurance and the Wyoming Retirement System (WRS) are different agencies. You must contact both agencies when you are ready to retire.
- You must qualify as a retiree through the Employees' Group Insurance office. Please see your Great West plan booklet Section B, page 20—Retiree, to determine your eligibility.
- You have 31 days from the date coverage ends to enroll as a retiree. You can keep coverage (health, dental and life) either as a whole or pick the coverage you want to keep individually.
- Dependents can stay on the plan as



EGI & WRS are different agencies, Contact BOTH when considering retirement

long as they have been enrolled at least the last year prior to your retirement.

- As an employee going from active status to retiree status, you will need to make a choice on the deductible level you wish to continue. Remember, changing your deductible at retirement, may mean you will have additional out of pocket expenses towards your deductible.
- Decide if retiree or COBRA coverage is your best option. You will be offered both.
- If you are participating in Flexible Spending, you could pay the remainder of the current year's premiums on a pre-taxed basis for the coverage you continue into retirement. The pre-taxed premiums must be deducted from your last "payout" check. You must have enough money to pay the whole year's premiums out of your last check.
- Retiree rate categories are based on Medicare eligibility. You may continue your health insurance once Medicare becomes your primary insurer. However, you should enroll in Medicare Parts A & B because Great West will pay as though you are enrolled. It is not necessary to enroll in a Medicare Part D (prescription drug) plan because our group plan is considered "creditable coverage".
- Premiums are payable either through a de-

duction from your Wyoming Retirement System benefit check or through a direct withdrawal from your checking or savings account.

- The Group Insurance office does not require that you are receiving your Wyoming Retirement System benefit at the time you retire.
- You may continue your retiree coverage as long as you wish. However, once you terminate all or part of your coverage, you will not be allowed to participate in the States' plans at a later date. There is no "open enrollment" period for retirees.
- You may change your deductible each year from November 1 through November 30 for a January 1 effective date.
- If you and your dependent are enrolled and you decease before your dependent, he/she will be eligible for Survivor Benefits.
- If you have any questions, concerns or just need a little counseling, please contact our office. We're here to help you get through this, *usually*, once in a lifetime event.
- Enjoy your retirement!!!

